

# Paris Session 2022



## Resilience and Reality: Unique Challenges and Learnings from Circuit Resiliency Project Planning and Execution

### Overhead Lines SC B2

Question 1.8 : B2-10155 highlights different constraints faced in relocation of one of the existing lines. Whether similar constraints are faced in other 4 such lines where the work is reported taken up?

Justin Kleehammer, USA

## Diverse Challenges

- Line 1
  - 2 miles inaccessible wetland
  - Relocation required 20+ new land rights
- Line 2
  - 27,000' long RROW
- Line 3
  - Line had potential NERC clearance violations that needed to be mitigated
  - Third Party Jobs that pushed/moved schedules
- Line 4
  - 'Spagetti Bowl' of RR tracks
- Line 5
  - 1,500' river crossing on double circuit lattice structure with transmission

Group Discussion Meeting

# Diverse Challenges - Visuals



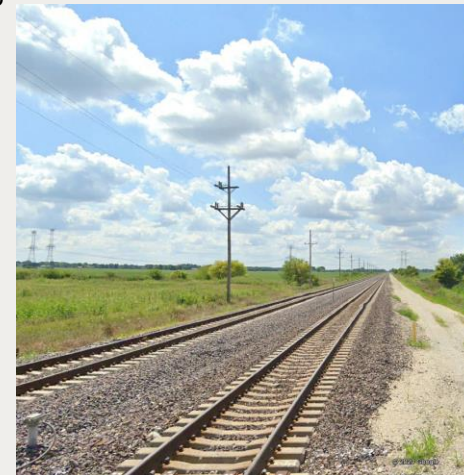
1,500' river crossing and lattice structure



10,000' inaccessible wetlands



Triple circuit crossing at Rail Road overpass  
Group Discussion Meeting



27,000' along rail road right of way