

Paris Session 2022



Communication solutions for condition monitoring

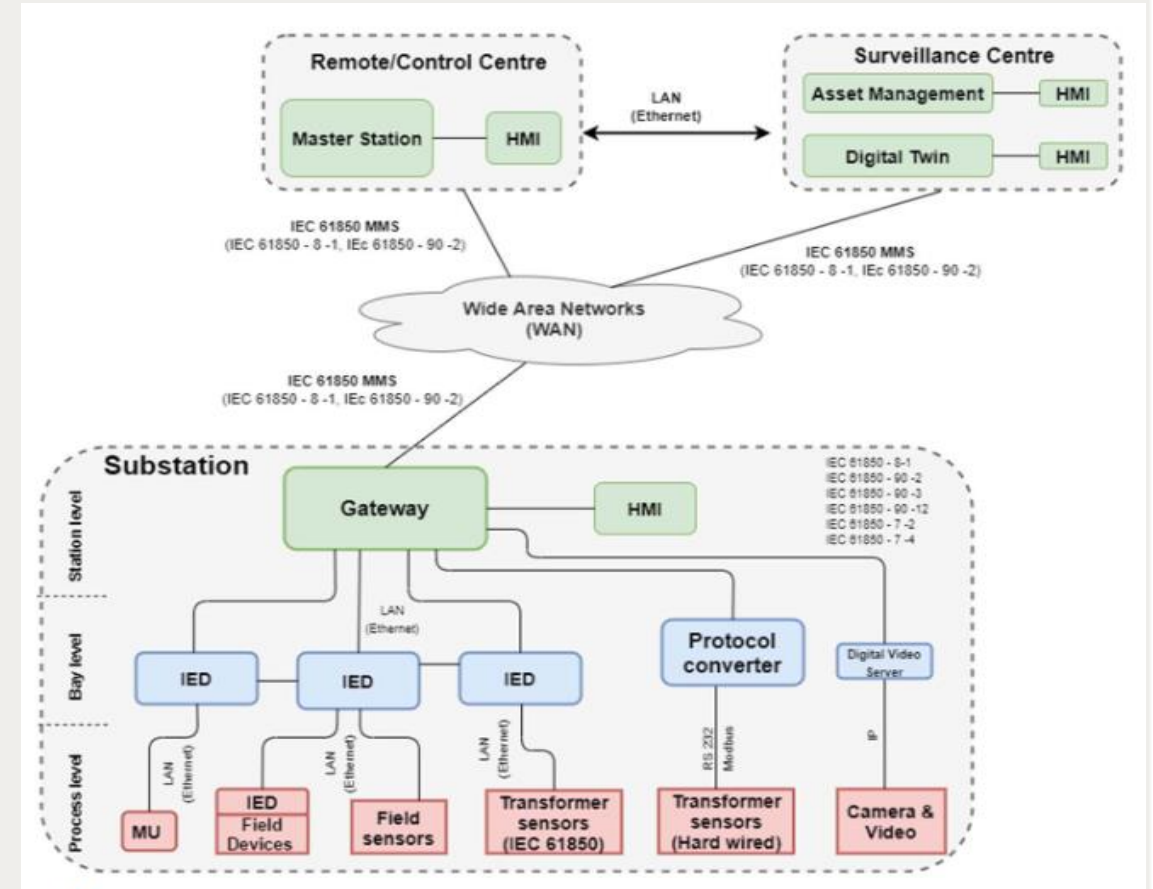
B5-B3_ Question 3.3 What are the emerging requirements for asset performance management systems? What are the preferred hardware and software architectures? Are the planned benefits already recognizable regarding cost reduction for operation and maintenance and increase of reliability?

Nargis Hurzuk_Norway



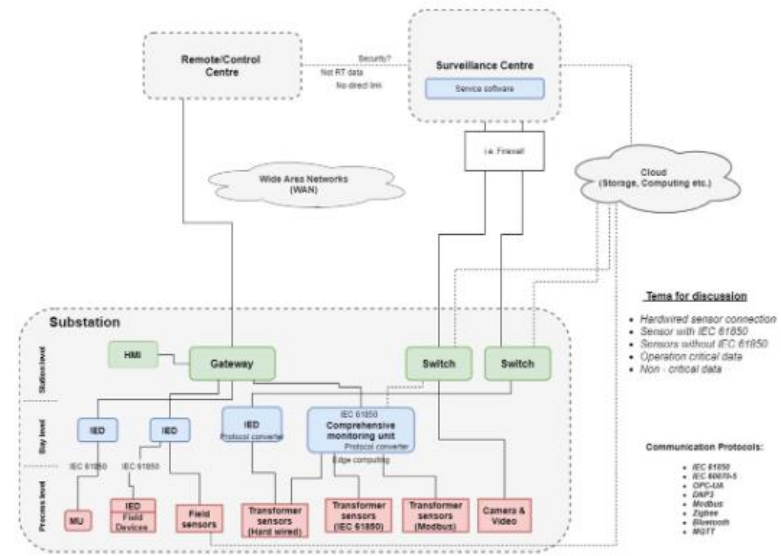
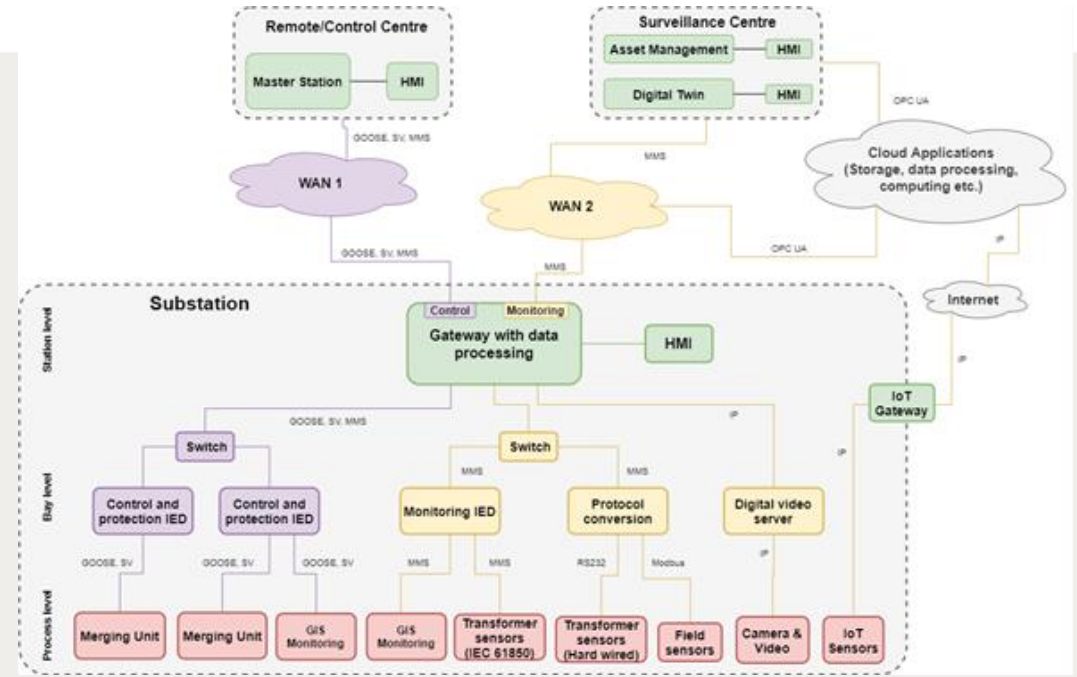
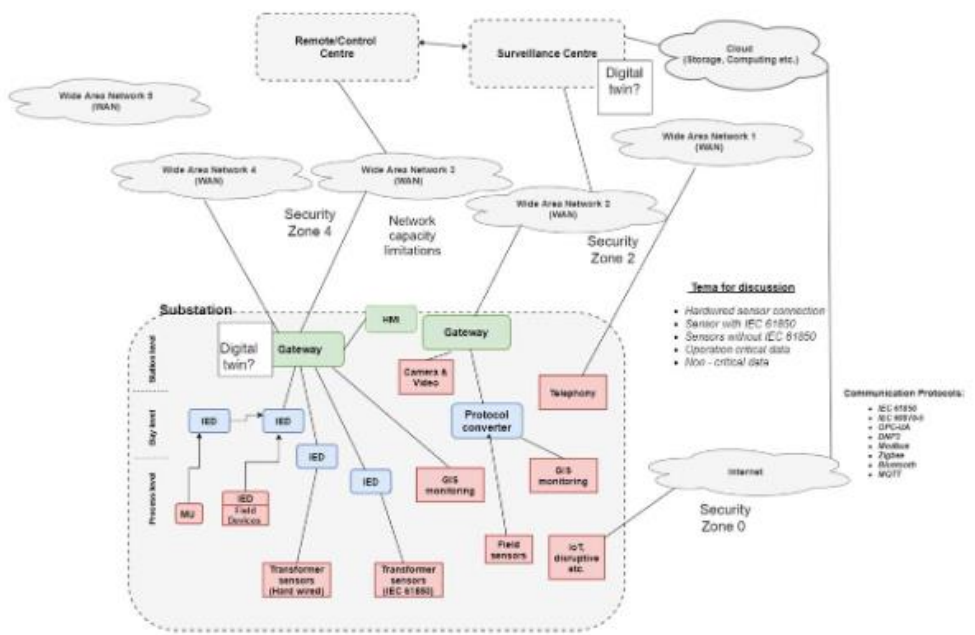
Eléments to be considered in network design for connection of sensor data in DSAS

- Sensors with and without IEC 61850 interface
- Hardwired sensor connections
- Operation critical vs Non-critical data
- Cyber security issues
- Remote access
- Lifetime cost
- Forward Compatibility



Group Discussion Meeting

Different alternatives evaluated



Group Discussion Meeting