

# Paris Session 2022



## Evolution of Renewable Energy Monitoring Centre in Southern Regional Grid: Experience through Data, Forecasting and Challenges

C2 - Power System Operation & Control

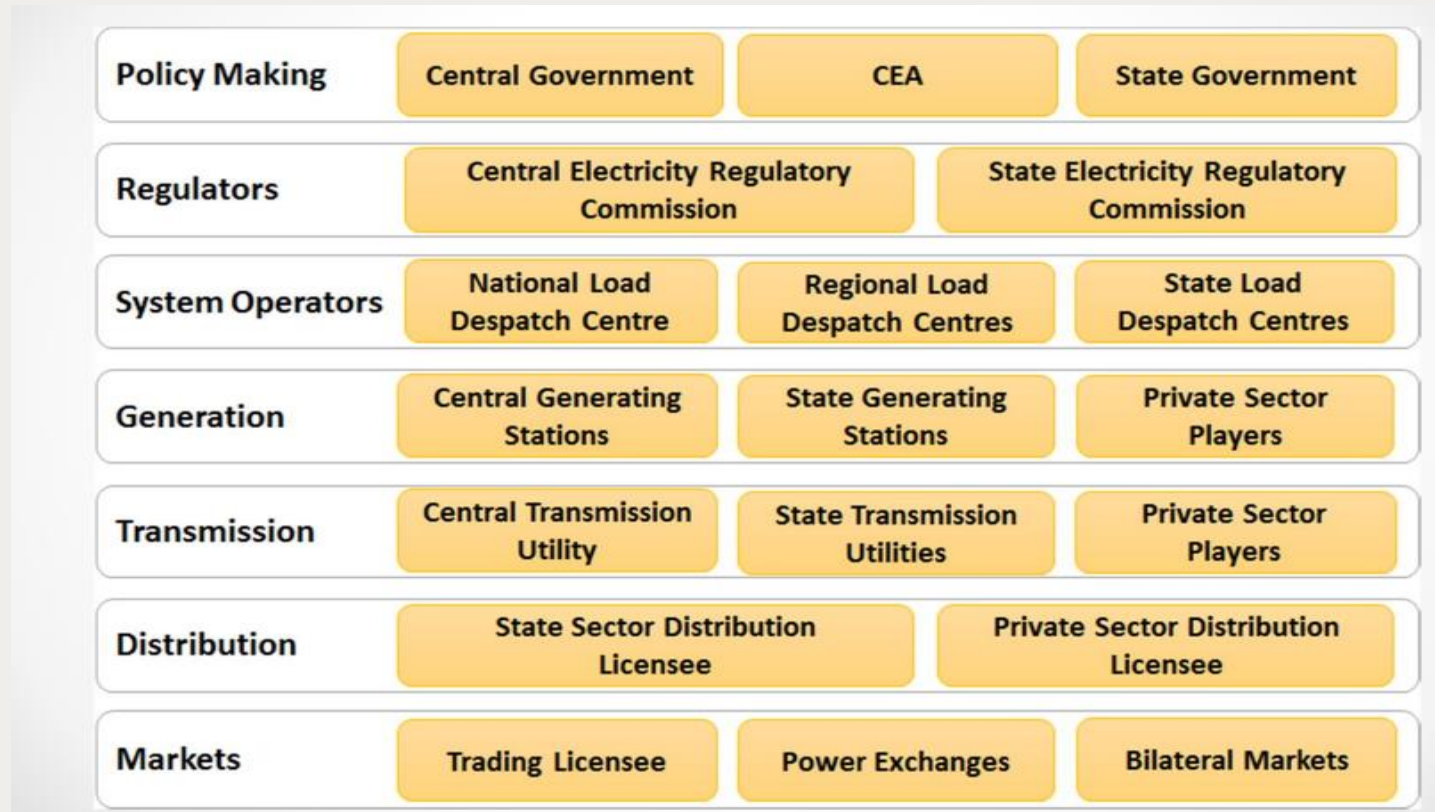
PS2 Question 2.8

How is co-ordination between the various levels of operational planning and dispatch being maintained to ensure ongoing power system security and reliability?

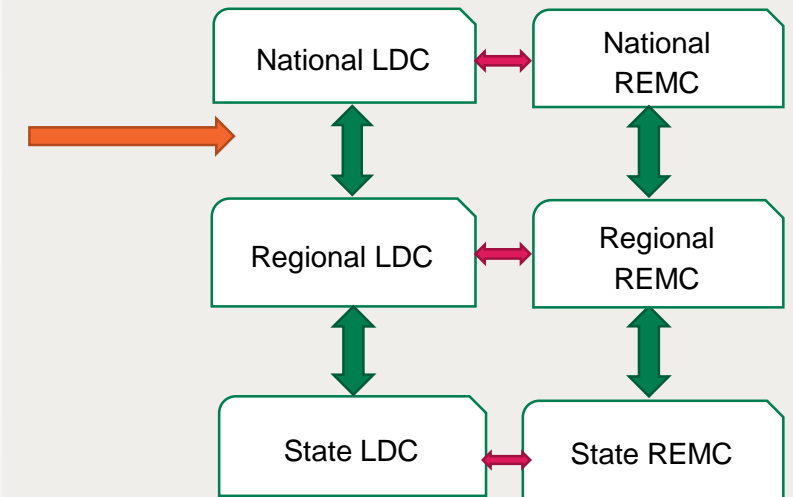
Shaik Mastanvali, India



## Question 2.8



*Structure of Indian electricity sector*



*Hierarchy of load despatch centres highlighting various levels of operational planning and dispatch*

## Question 2.8

- Roles & responsibilities of all LDCs are mentioned in regulations notified by CERC & SERC and amended from time to time.
- Annual LGBR preparation & coordinated outage planning at regional & national level
- Day ahead demand forecasting by SLDCs. Week ahead, Day ahead & Intraday RE forecasts by REMCs
- Schedules for the commercial transactions will be based on the Available Transfer Capacity(ATC) published by NLDC for the inter-control area.
- Surplus/ deficit power through Power exchange- Green day ahead market/Real time market
- Separate procedure for scheduling and dispatching of conventional energy and Renewable energy
- Incentives to RE generators brought in by policy makers

Group Discussion Meeting