

# Paris Session 2022



## Considering vulnerability and perspectives of Stakeholders in energy expansion

SC3 PS1 Q.1.18



Katia Cristina Garcia - Brazil

Group Discussion Meeting

© CIGRE 2022

1

© CIGRE 2021

# Considering vulnerability and perspectives of Stakeholders in energy expansion

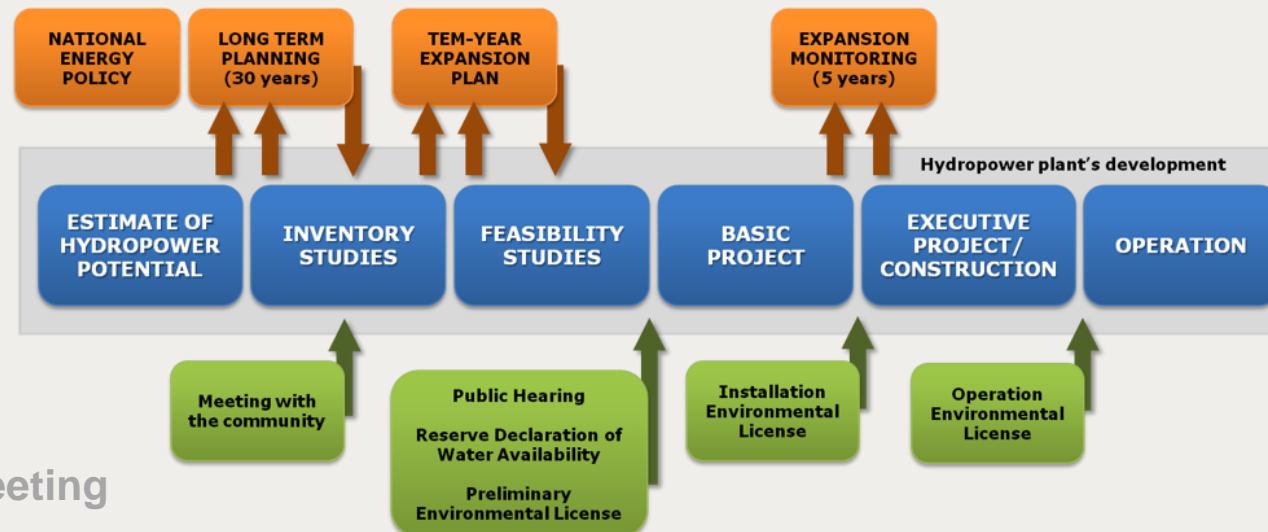
- Negative effects of **energy infrastructures** on local population must be considered for sure, but they are not enough anymore. In the context of **Energy Transition**, considering medium and long-term scenarios of **evolution of energy systems** must include other relevant issues, as **local impacts of climate change**, that may increase **local vulnerability** and demand different of **adaptation measures (physical, social, institutional)**.
- Also, consider **local perception**, suggestions and experience in the expansion planning is critical for the analysis of **alternatives of the project**, for the definition of **social projects**, and for the definition of **local adaptation strategies**. This is part of the **stakeholder engagement**.
- **Stakeholder engagement** is crucially different to **stakeholder management**: stakeholder engagement implies a willingness to listen, to discuss issues of interest to stakeholders and, eventually, to change what it aims to achieve and how it operates.
- It must be **considered since the beginning of the development planning** until the operation phase, in a structured framework.

Group Discussion Meeting

# Status of Hydropower Projects' Planning in Brazil

- Brazil has been developing a framework for planning sustainable hydropower development and operation.
- In Brazil, the entire planning process to implement a HPP include some kind of social participation, either through technical meetings with the presentation of the studies (that are mandatory), or through specific social communication programs.
- It is important to maintain them throughout all stages of the HPP implementation (from planning to operation), especially in basins where more vulnerable people, as indigenous people are present, for example.

## Brazilian Power System Expansion Planning and Hydropower Planning

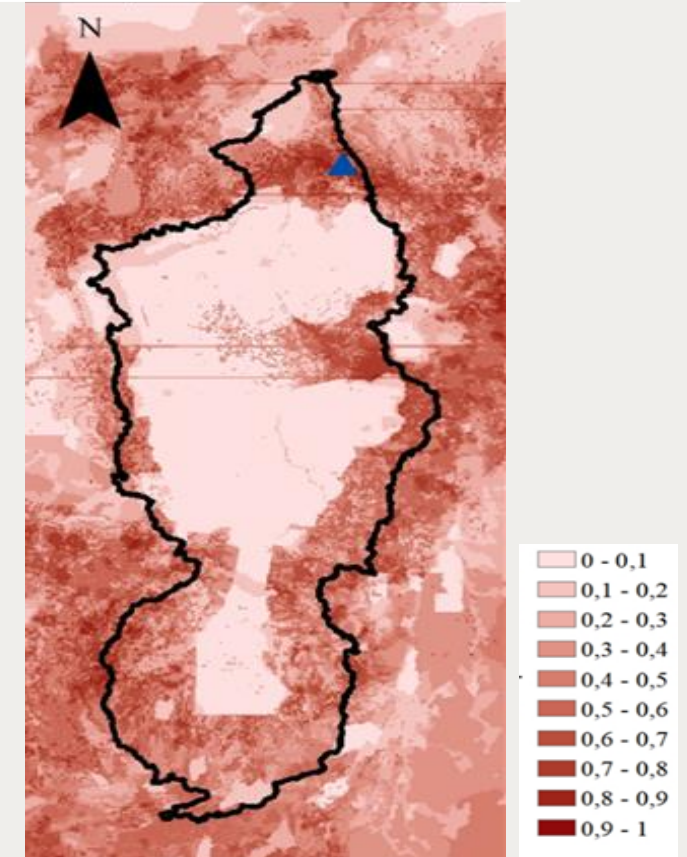


Group Discussion Meeting

# Local Vulnerability of Climate Change in energy expansion

- But issues related to **climate change** are not yet formally considered in the **Brazilian Expansion Planning and Hydropower Planning**
- The **methodology presented** in the paper 10163 aims to identify the **vulnerable areas to climate change** in order to guide **local adaptation strategies**.
- It was developed to be included as a part of the **Hydropower Inventory Studies of River Basins**.
- Although the methodology presented is already defined in terms of criteria and information to be considered, the **stakeholder engagement** is essential to include specific information about **local population, indigenous people, basin committees**, etc, that can enrich the assessment of **local vulnerability** and the definition of **adaptation measures**.

Exposure + Sensitivity



Group Discussion Meeting