

# Paris Session 2022



## Voltage measurements in LV grids

Study Committee C6  
Preferential Subject 2  
Question 2.10, on (voltage) measurements  
from (smart) meters

Evert de Haan, the Netherlands

Group Discussion Meeting

© CIGRE 2022

© CIGRE 2021

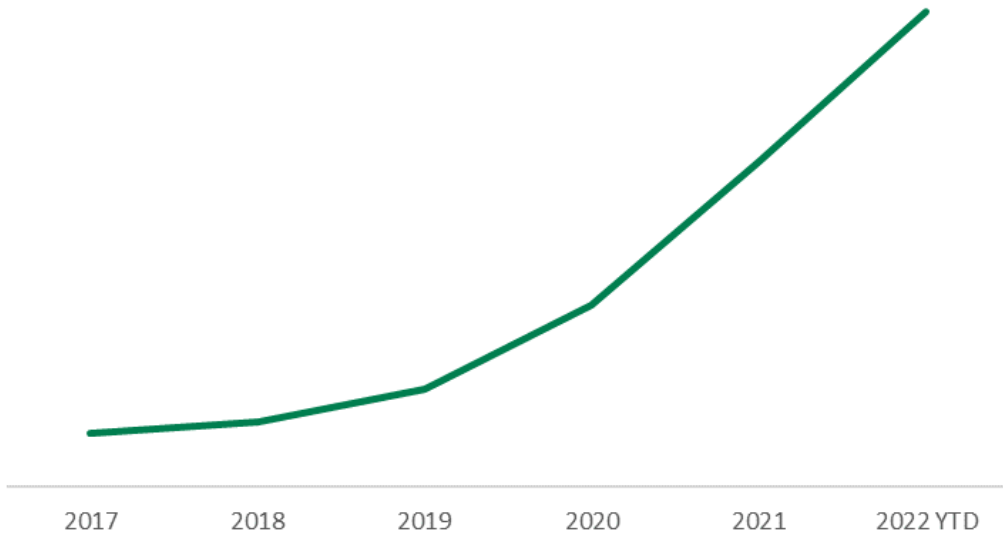
0.01 GW  
0.00%  
0.00%

0.09 GW  
0.52%  
0.05%

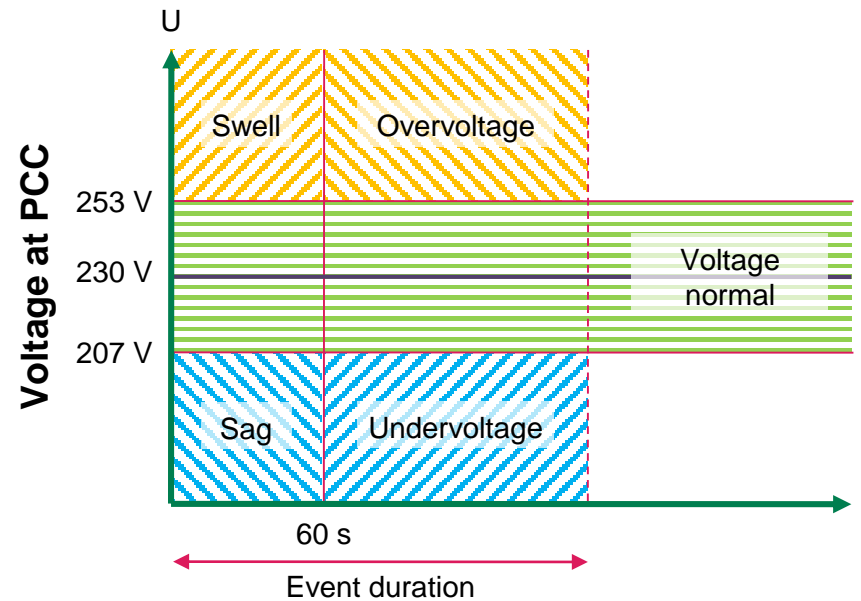
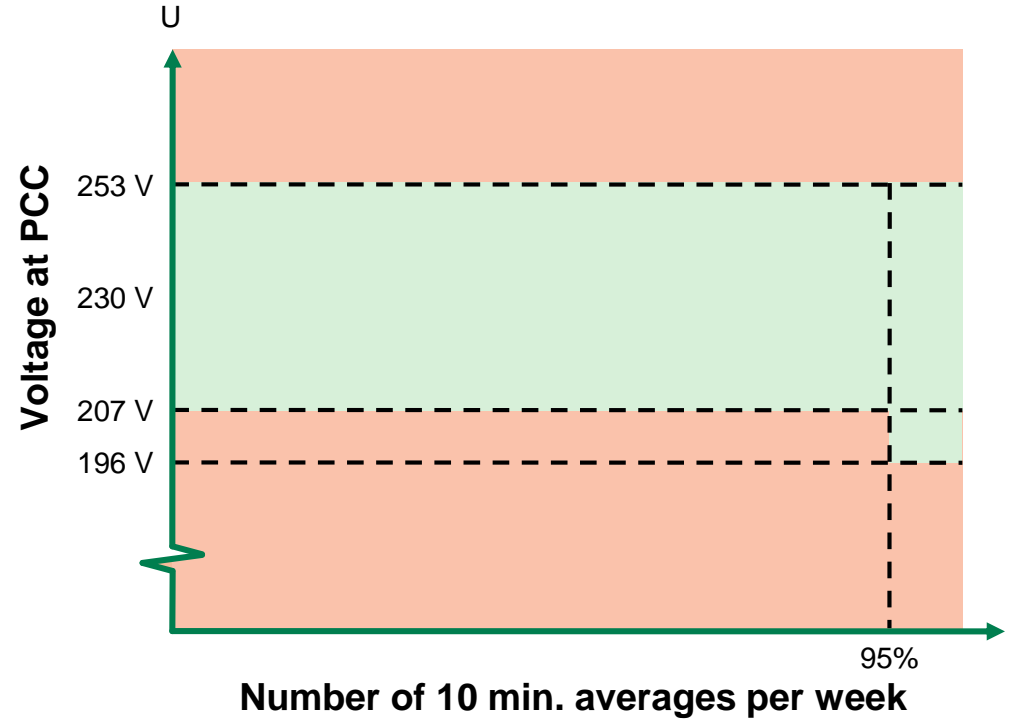
11 GW  
4.63%  
0.25%

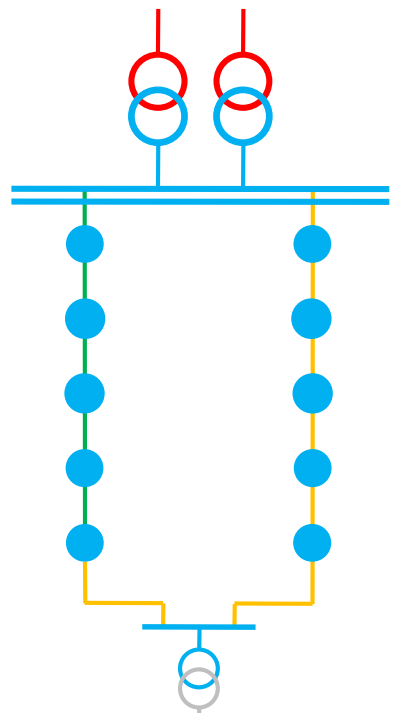


Voltage complaints increase rapidly



And smart meters report when it is too late





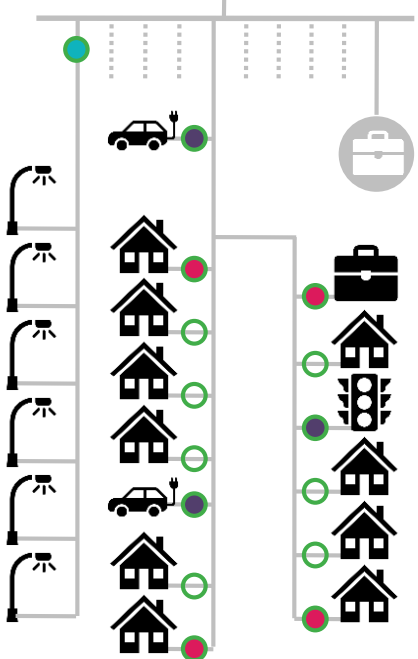
Present



Public lighting voltage measurements (LV rail)



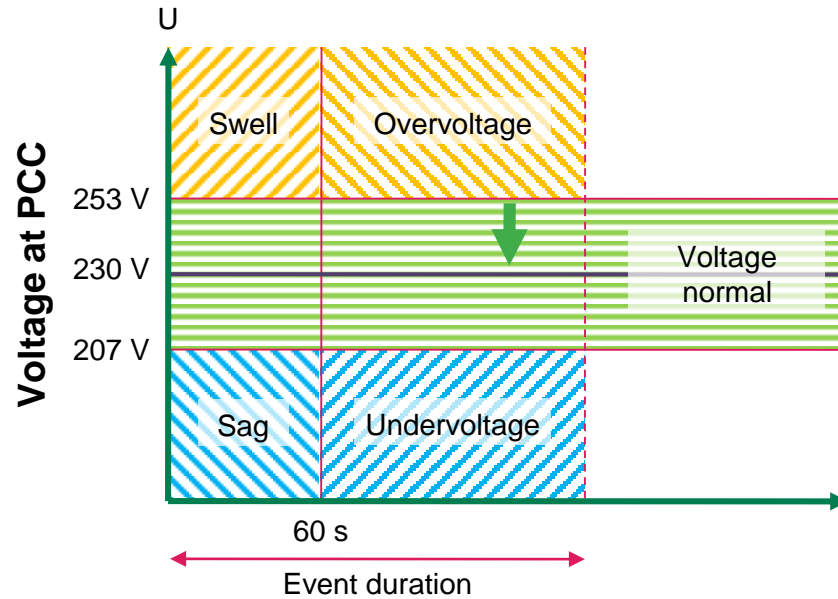
Public objects voltage measurements (LV feeder)



Near future



Seasonal voltage measurements at LV feeder ends



More informative voltage events