

# Paris Session 2022



## Experience with Electrical Tests in UHVDC System for Safety Quantities Definition for Live Line Working

SC D1 PS1 Q 1.05

José Antonio A. S. Cardoso - BRAZIL



# Laboratory test supporting Maintenance

**Theoretical analysis:**  
International Standards

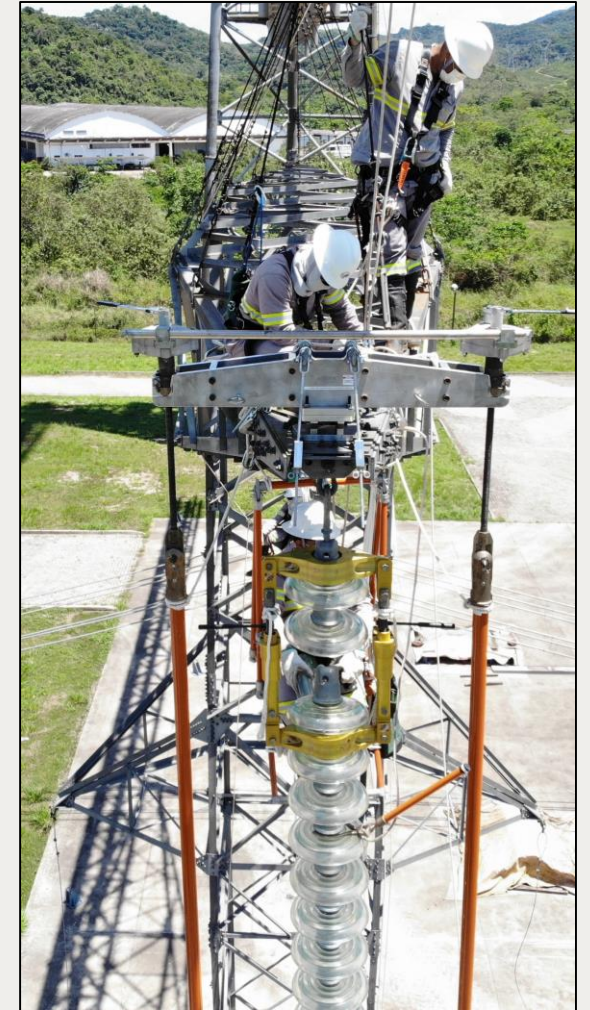
**Practical evaluation:**

- Transmission tower and line configuration
  - Insulator string length
    - Insulator type
- Linemen access mode to potential
  - Live line tools employed
- Climate and altitude conditions

Group Discussion Meeting



© CIGRE 2022



2

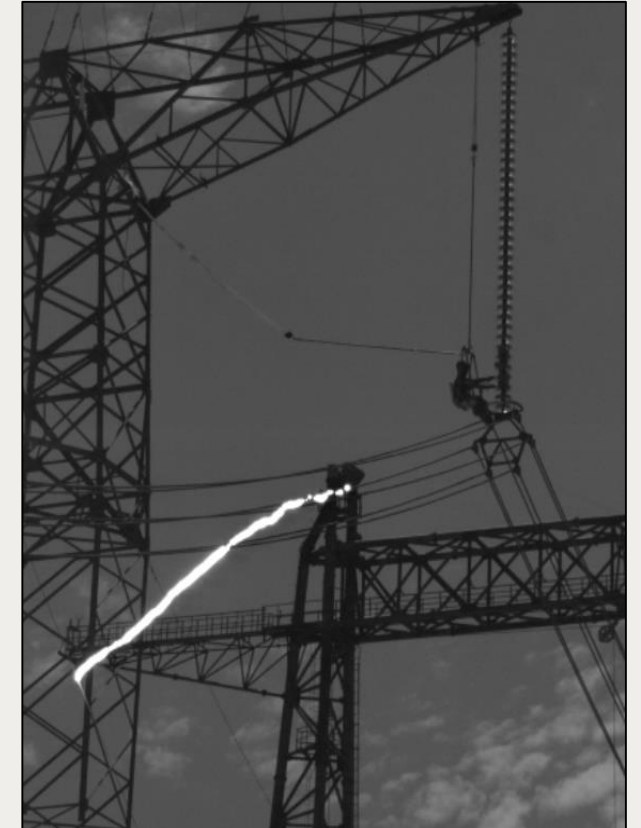
# Laboratory test supporting Maintenance

600 kV DC: Cradle and Ladder



Group Discussion Meeting

800 kV DC: Clamp tool and Insulated chair



The results are not directly transferable

# UHVDC Live Line Working

Live line working in 800 kV DC

- Its is feasible
- It is safe

Cigré WG

- Test procedure definition
- Update the standards
- Cooperation on other aspects
  - Conductive cloth, DC electric field etc.

Group Discussion Meeting

