

## Study Committee B3 Substations and Electrical Installations

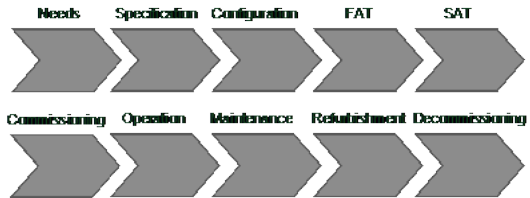
10904\_2022

### IEC 61850 specification process applied to classic customer project

Camille BLOCH / Christoph BENNAUER / Navdeep AHUJA / Thomas STERCKX  
Schneider Electric France / Schneider Electric Germany / Schneider Electric France / Elia Belgium

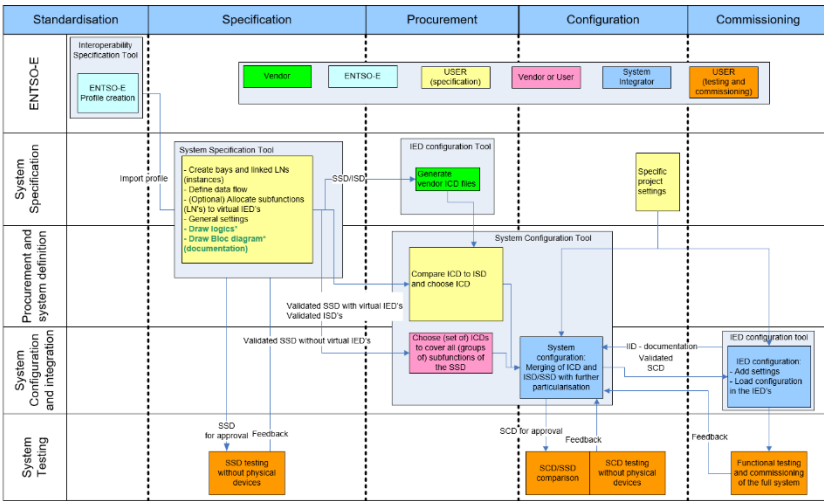
#### Motivation

- Enhance lifecycle of a project with IEC 61850 engineering process



#### Method/Approach

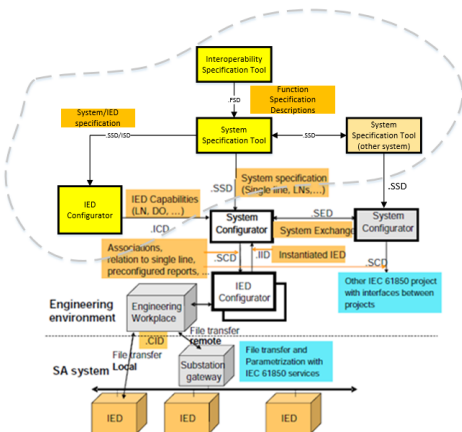
- European founded project to analyze and improve process



\* Not implemented for OSMOSE project

#### Objects of investigation

- Improve Standardization and Specification phases
- Create vendor independent specification
- Integrate the result into the standard
  - IEC 61850-90-30: functional specification
  - IEC 61850-7-6: application template definition



## Study Committee B3 Substations and Electrical Installations

10904\_2022

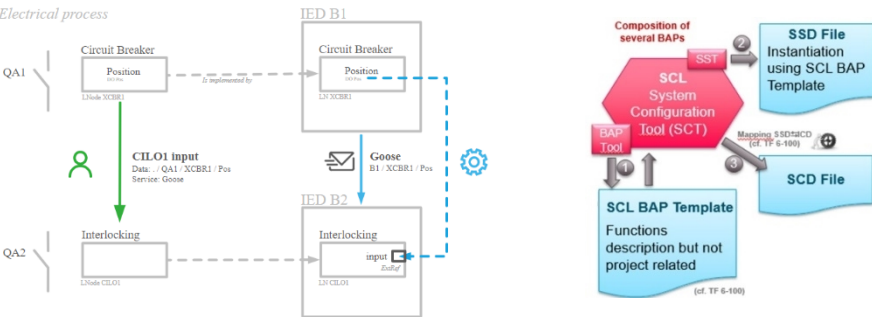
### IEC 61850 specification process applied to classic customer project

Camille BLOCH / Christoph BENNAUER / Navdeep AHUJA / Thomas STERCKX  
Schneider Electric France / Schneider Electric Germany / Schneider Electric France / Elia Belgium

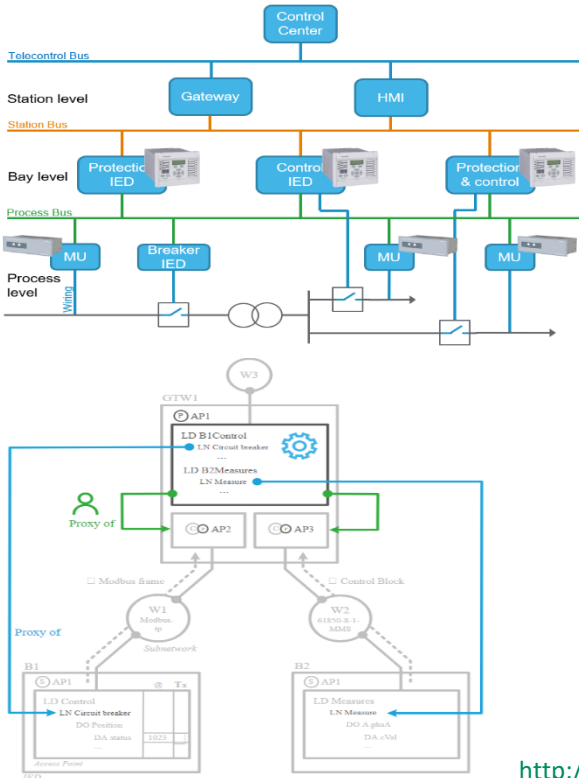
#### Experimental setup & test results

- Application Scheme Design
- Standardizing scheme

Electrical process



- Vertical integration



## Study Committee B3 Substations and Electrical Installations

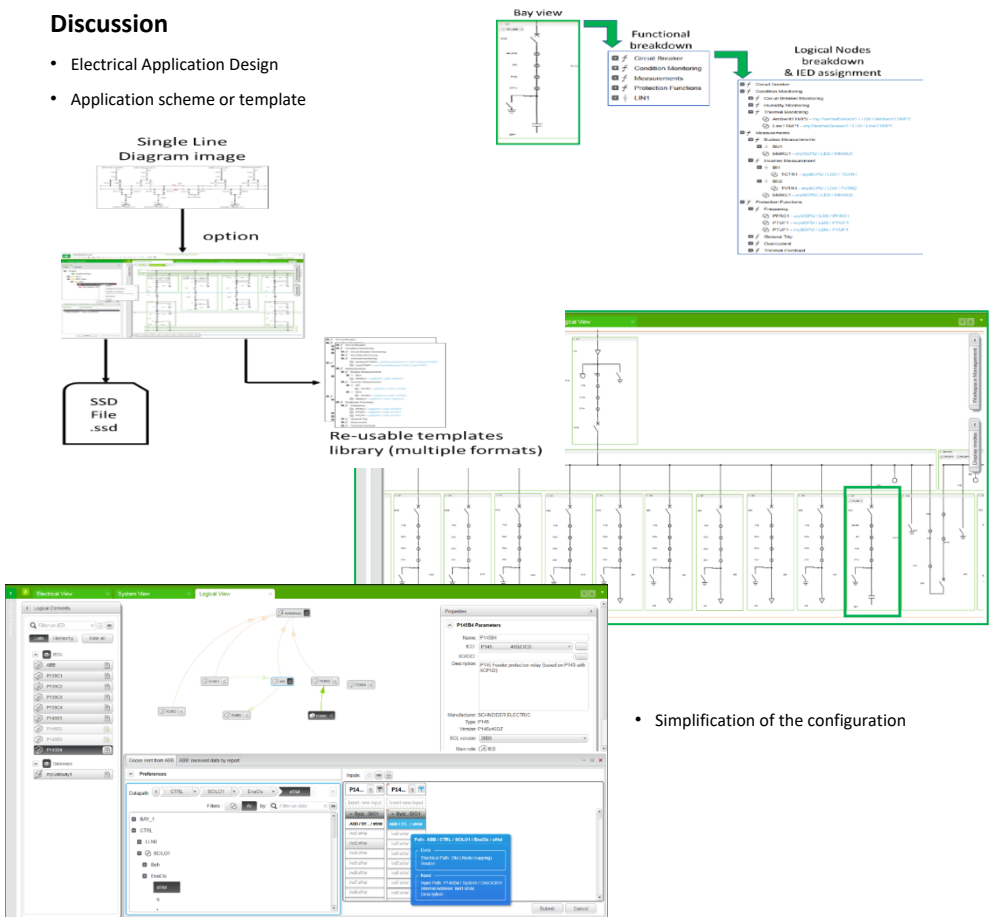
10904\_2022

### IEC 61850 specification process applied to classic customer project

Camille BLOCH / Christoph BENNAUER / Navdeep AHUJA / Thomas STERCKX  
Schneider Electric France / Schneider Electric Germany / Schneider Electric France / Elia Belgium

#### Discussion

- Electrical Application Design
- Application scheme or template



- Simplification of the configuration

#### Conclusion

- Standardization of application to:
  - Create library of reusable application
  - Automate engineering of system
  - Prepare tests procedures earlier
- Vendor independent specification:
  - Interchangeability of devices
  - Virtualization and digital twin ready specifications