

## Study Committee B3

### Substations and Electrical Installations

Paper ID\_11000

# Challenges and experiences on renovation of EGAT's conventional substation to IEC 61850 based digital substation

K. SANTAYANON, P. LERTWANITROT

Transmission System Engineering Division, Electricity Generating Authority of Thailand (EGAT)



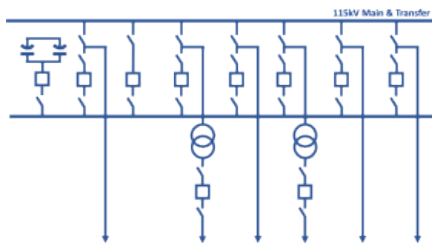
For more info

## Motivation

- Higher penetration of Distributed Generator (DG) according to the Power Development Plan 2018 of Thailand
- Communication infrastructure is required to support smart grid
- IEC 61850 based digital substation allows interoperability

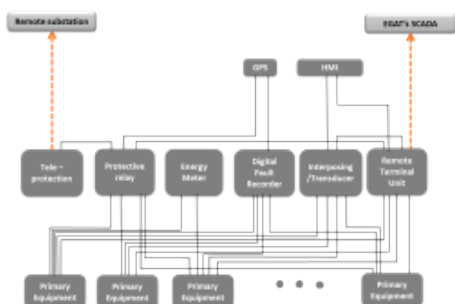
## Scope of the project

- Brownfield substation
- Renovation on secondary equipment
- 115 kV Main & transfer air-insulated substation
  - 115kV feeder: 4 feeders
  - 115/22kV transfer feeder: 2 feeders
  - 115kV capacitor bank: 1 feeders

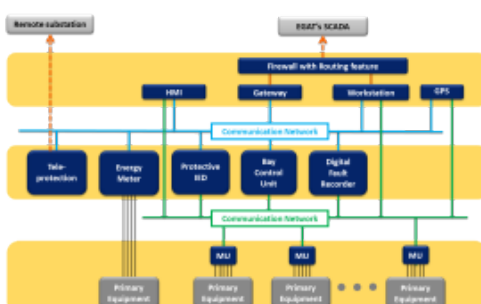


## Topology

### Conventional substation

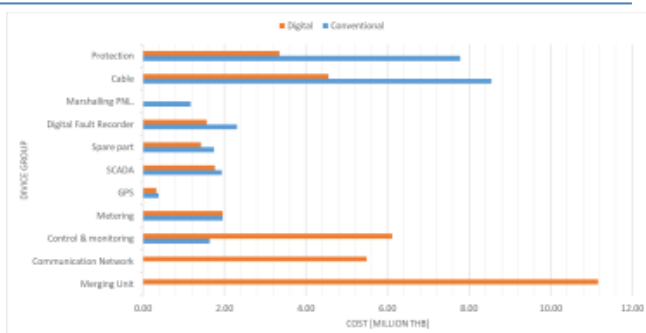


### Digital substation



## Cost comparison

- Secondary equipment is considered
- Total cost
  - Conventional substation: 27.45M THB
  - Digital substation: 37.68M THB
- Digital requires 36% more CAPEX



## Study Committee B3

### Substations and Electrical Installations

Paper ID\_11000

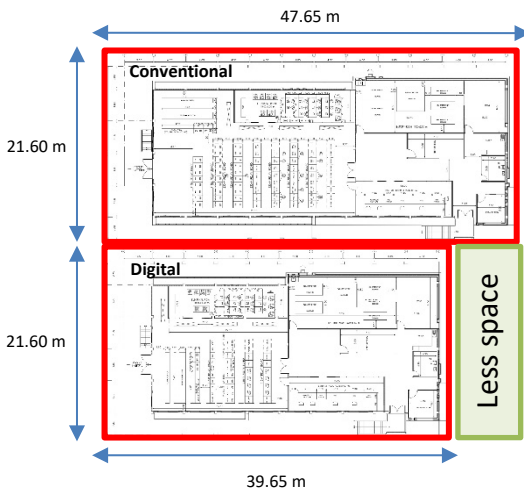
# Challenges and experiences on renovation of EGAT's conventional substation to IEC 61850 based digital substation

K. SANTAYANON, P. LERTWANITROT

Transmission System Engineering Division, Electricity Generating Authority of Thailand (EGAT)



For more info



## Compensation for higher Cost

- Less panel is required due to more compact design using multi-function IEDs
- For greenfield substation, the control building can be redesigned.
- Generic layouts of control building are taken into comparison.

16.79% space reduction

9.50M THB decrease in building construction cost

## More Benefits

- Shorter construction and installation time (= lower cost)
- Support further applications
  - Unmanned substation
  - Substation monitoring system (asset management)

## Challenges

- Changes in work process and responsibilities as well
- Outdoor merging unit cubicle must be taken very carefully, especially in tropical country which has temperature and humidity concern.
- Hybrid design would cause complication and over-investment.

## Conclusion

- Cost
  - Secondary equipment cost is higher in digital substation. 36% for this case!
  - For greenfield project, overall CAPEX of digital substation tends to be less.
- Available for furthermore applications, e.g., unmanned substation, asset management
- Work process needs to be reconsidered. Reskill is necessary.